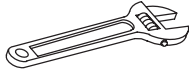


SUGGESTED TOOLS AND MATERIALS



Adjustable Wrench



Teflon Tape



Philips Screwdriver



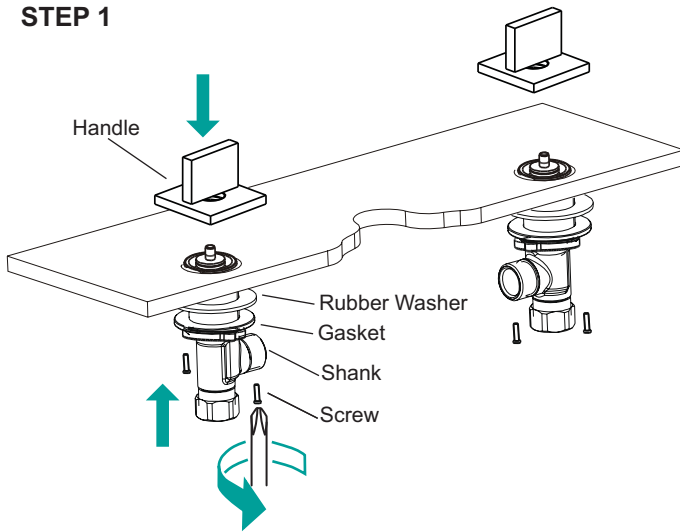
Channel Lock

BEFORE YOU BEGIN

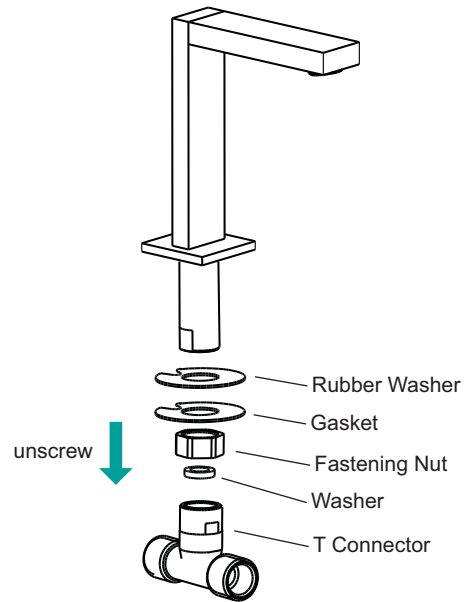
- Turn off the main water supply
- Observe all local plumbing and building codes
- Deck hole Diameter: 1-1/4" to 1-3/8" diameter
- Maximum deck thickness is 3"
- This lavatory faucet comes completely assembled and water tested

INSTALLATION INSTRUCTIONS

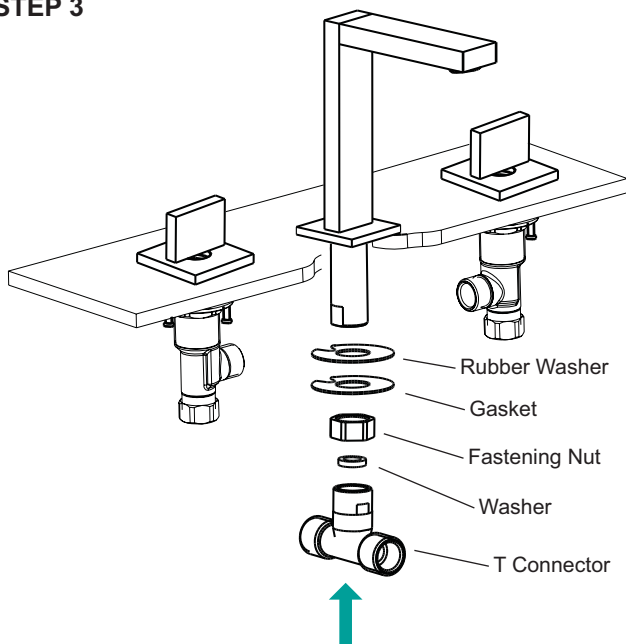
STEP 1



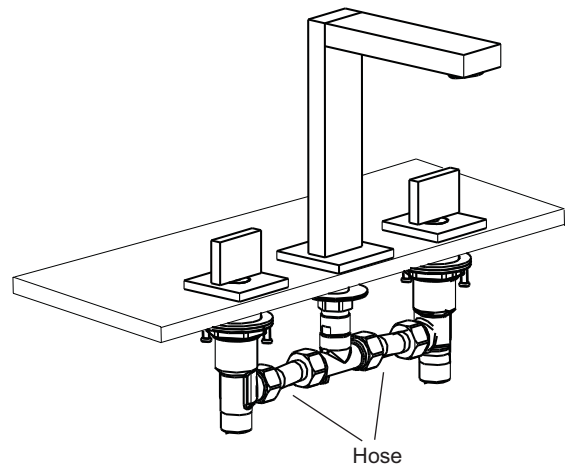
STEP 2



STEP 3



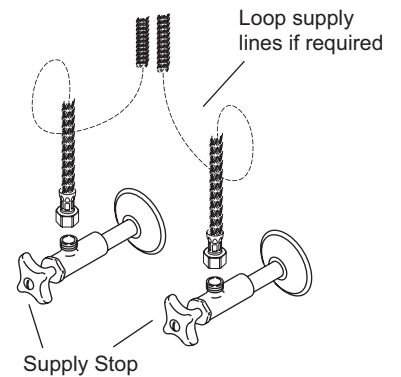
STEP 4



WATER SUPPLY CONNECTIONS

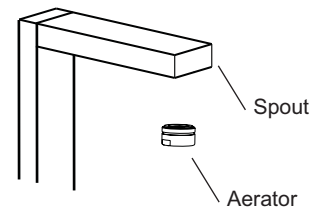
Important! If SUPPLY LINES are too long, loop them to avoid kinking. If additional supply length is required, installer must purchase additional parts separately.

- Connect the Faucet Supply Lines directly to the existing wall / floor supplies.
Connect Left supply to HOT (Marked with a Red Band) and Right supply to COLD (Marked with a Blue Band)
- Tighten the nuts with small crescent wrench and do not over tighten as this may strip the threads.



TEST INSTALLED FAUCET

- Unscrew Aerator from the Spout.
- With handle in OFF position, turn on water supplies and check all connections for leaks. Turn ON faucet for two minutes to flush water lines thoroughly. Debris in the water can damage the Cartridge causing it to leak.
- Replace Aerator to the Spout.



SERVICE

Caution: Turn off hot and cold water supplies before beginning.

- To remove and clean or replace cartridge:
- Remove Handle
- Unscrew Fastening Nut, Cover and Cartridge from the Shank
- Inspect Cartridge for debris and clean if necessary.
- Reinstall Cartridge, Cover, Fastening Nut and Handle

CARE INSTRUCTIONS

To keep your new faucet looking new, please follow these simple care instructions

- DO:** Simply rinse the faucet clean with clean water and mild soap
Dry the faucet with a soft cotton cloth
- DON'T:** Do not use any abrasive cleaners, cloths or paper towels.
Do not use any cleaning agents containing acids, polish abrasives or harsh cleaner or soap

Regular and routine cleaning will reduce the need for heavy cleaning and polishing.

